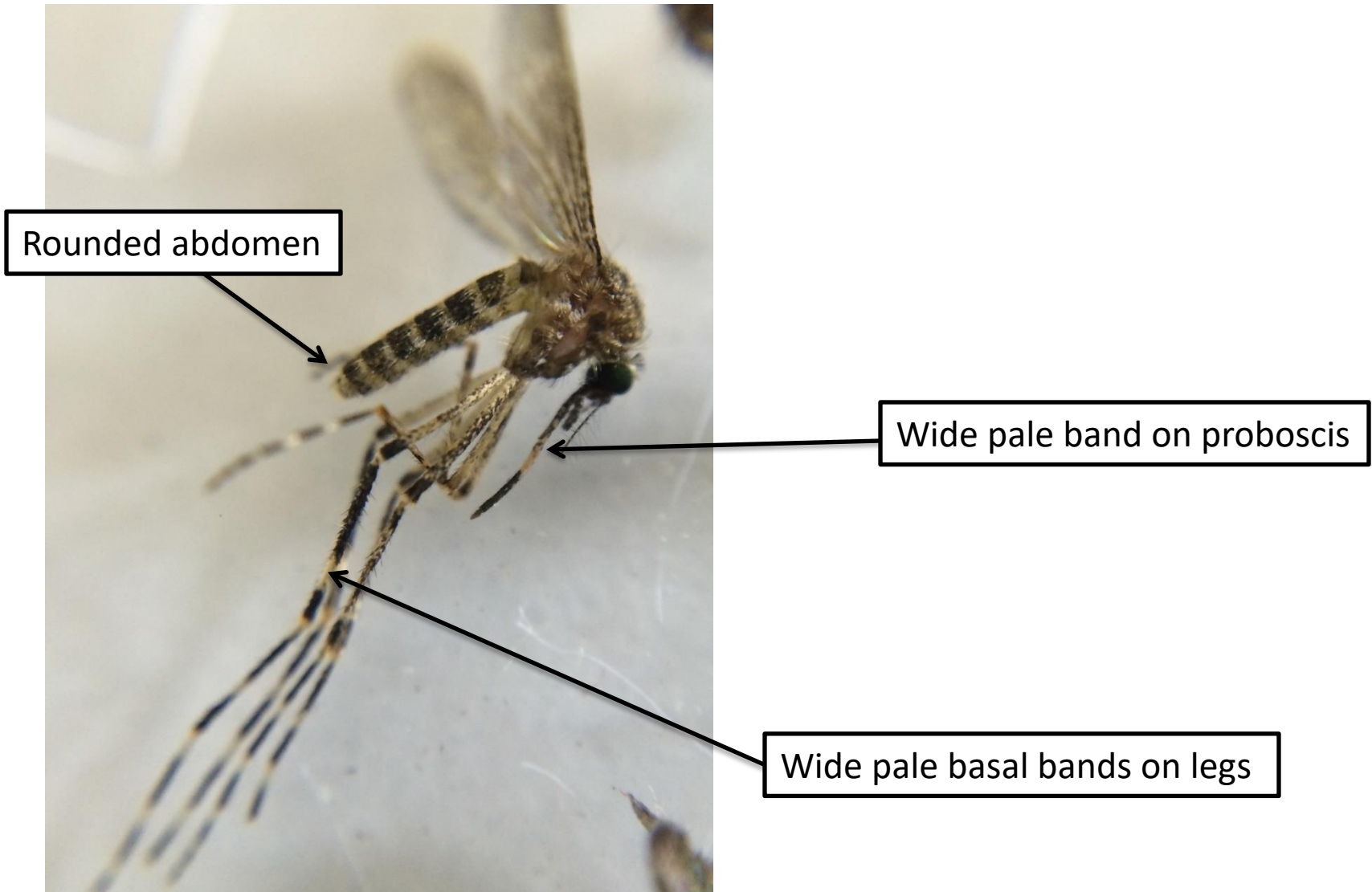


Entomologist Challenge

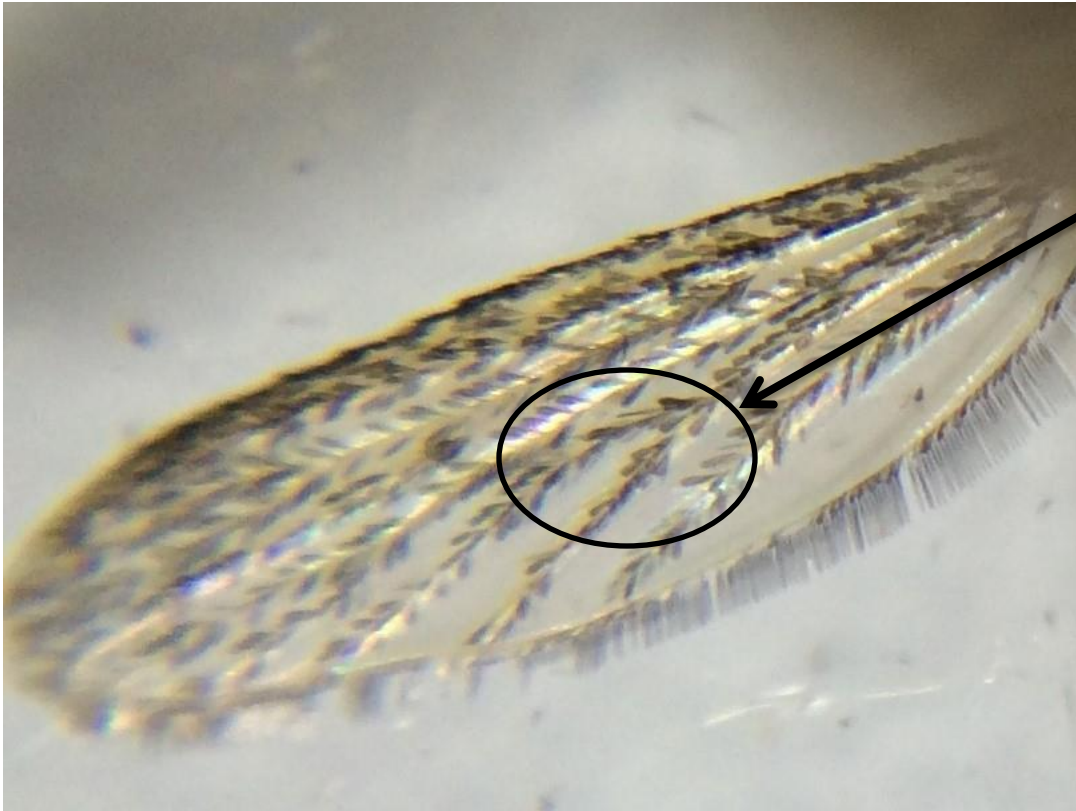
Featuring:
Coquillettidia perturbans (Walker)



Morphology

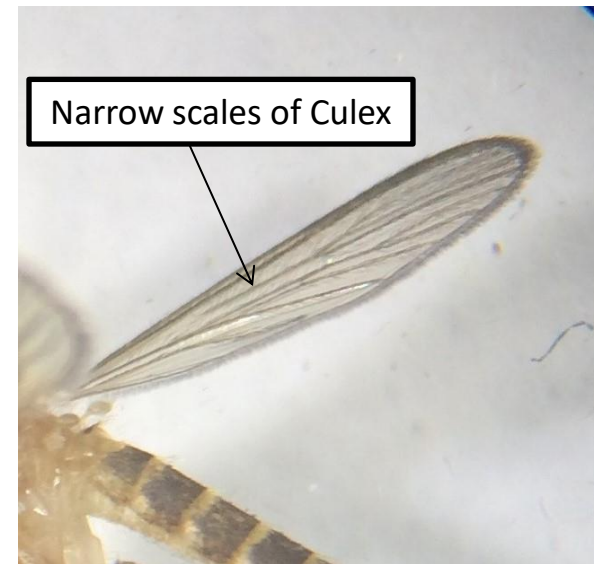


Morphology



Salt and pepper wing scales

Scales broad/triangular



Narrow scales of Culex

Larval Morphology





Larva

Overwintering stage



University of Florida Entomology Dept.

Pupa

May – August

Life History

Adult

June – September
Peak in early July

Egg

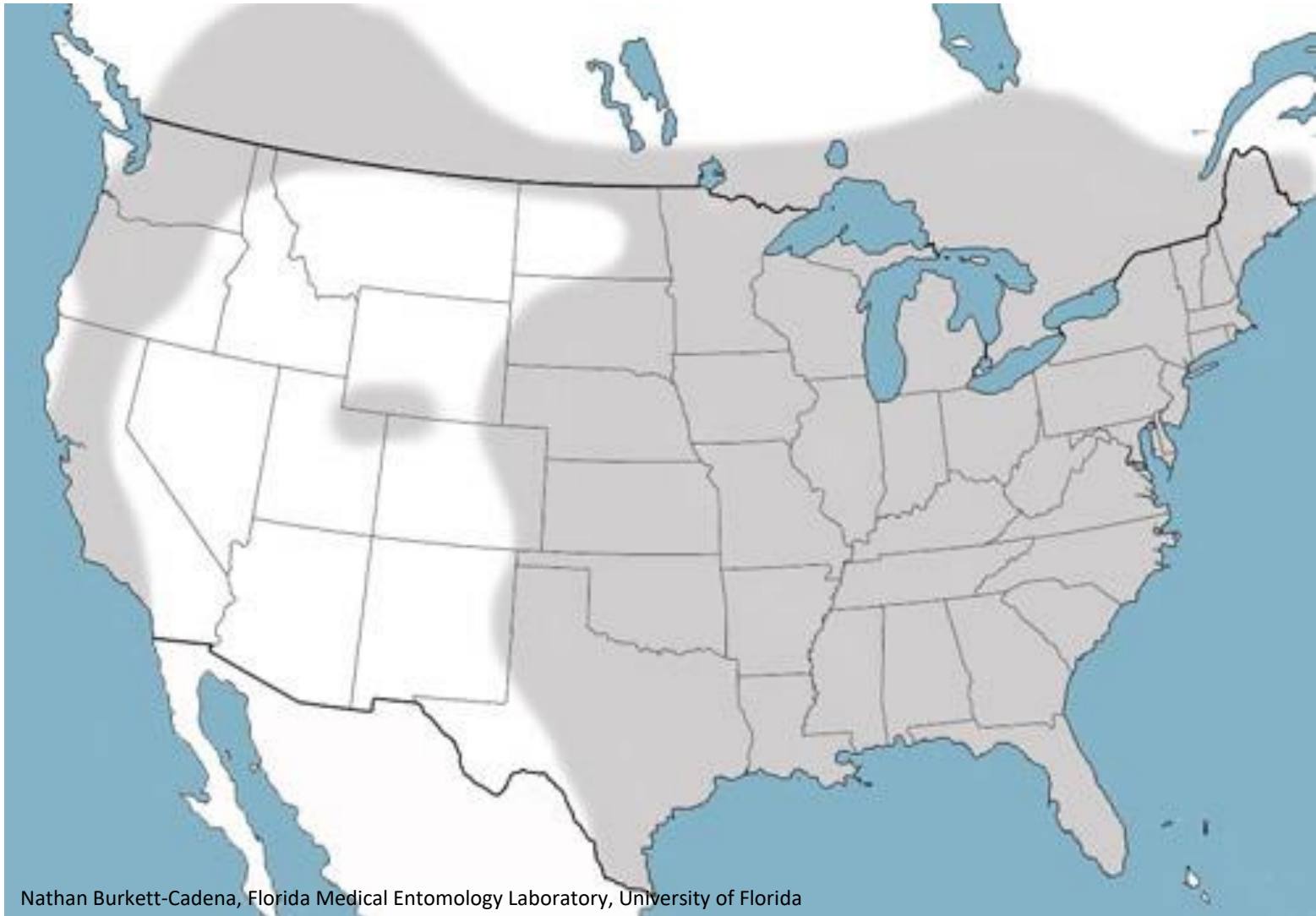
July - August



University of Florida Entomology Dept.



Distribution



Nathan Burkett-Cadena, Florida Medical Entomology Laboratory, University of Florida

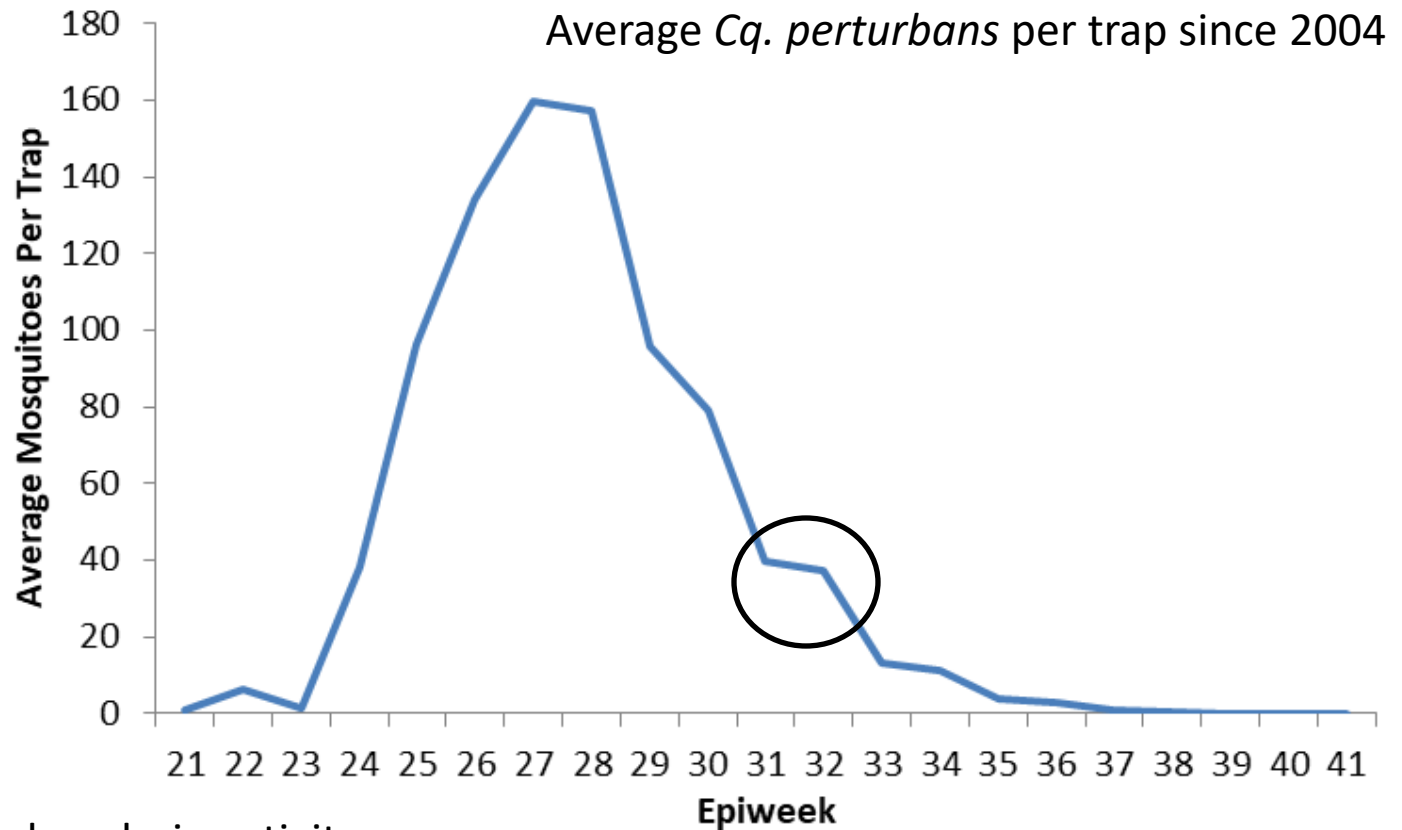
Habitat



- Permanent marshes
- Vegetation:
 - Cattail
 - Swamp loosestrife
 - Buttonbush
 - Water hyacinth
 - Arrowhead
 - Duckweed
 - Pickerel weed
 - Sedges
 - Rushes
 - Spatterdock

Biology

- Seasonality



Sometimes dual peaks in activity

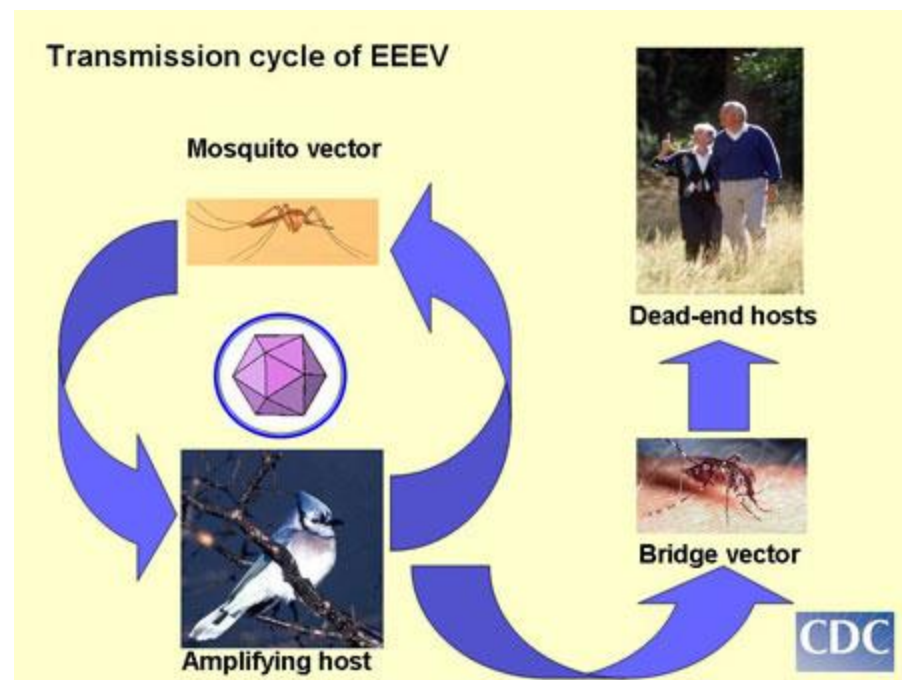
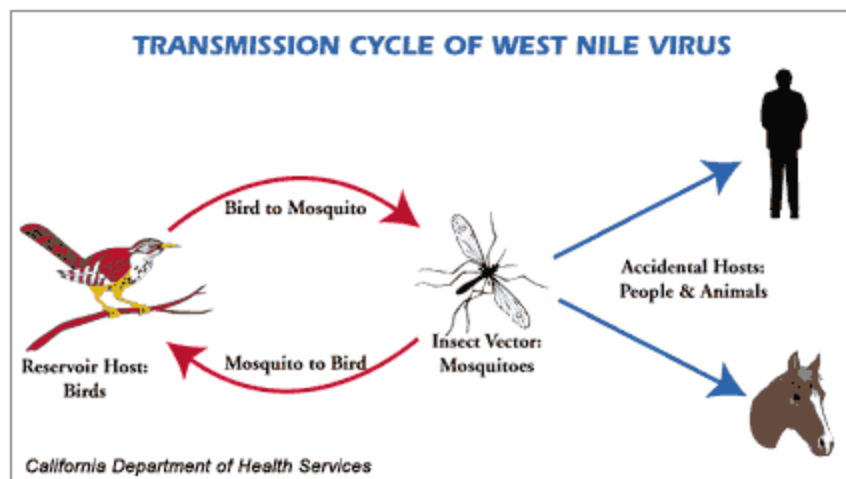
Biology

- Seasonality
- **Host Preference** – Birds and mammals, most active dusk and dawn, esp. bite in forested areas



Biology

- Seasonality
- Host Preference
- **Vector Competence** – bridge vector



Biology

- Seasonality
- Host Preference
- Vector Competence
- **Flight Range** – up to 5 miles, more commonly within about a mile

Andreadis, T.G., M.C. Thomas, and J.J. Shepard. Identification guide to the mosquitoes of Connecticut. Connecticut Agricultural Experiment Station, New Haven, Connecticut, USA. 173pp.

Bosak, P.J., L. M. Reed, and W. J. Crans. 2001. Habitat preference of host-seeking *Coquillettidia perturbans* (Walker) in relation to birds and eastern equine encephalomyelitis virus in New Jersey. *Journal of Vector Ecology* 26(1): 103-109.

Crans, W.J. 2004. A classification system for mosquito life cycles: life cycle types for mosquitoes of the northeastern United States. *Journal of Vector Ecology* 29(1): 1-10.

Hagmann, L.E. 1952. *Mansonia perturbans*, recent studies in New Jersey. Proc. 29th Ann. Mtg. New Jersey Mosquito Extermination Association (39): 60-65.

Hagmann, L.E. 1953. Biology of *Mansonia perturbans* (Walker). Proc. New Jersey Mosquito Extermination Association.

Lewis DJ, Bennett GF. 1980. Observations on the biology of *Mansonia perturbans* (Walker) (Diptera: Culicidae) in the Nova Scotia-New Brunswick border region. *Canadian Journal Zoology* 58: 2084-2088.

Lewis DJ, Bennett GF. 1980. Observations on the biology of *Mansonia perturbans* (Walker) (Diptera: Culicidae) in the Nova Scotia-New Brunswick border region. *Canadian Journal Zoology* 58: 2084-2088.

McNeel, T.E. Observations on the biology of *Mansonia perturbans* (Walk.). Diptera, Culicidae. 1932. Proc. 19th An. Mtg. New Jersey Mosquito Exterm. Ass., Atlantic City: 91-96.