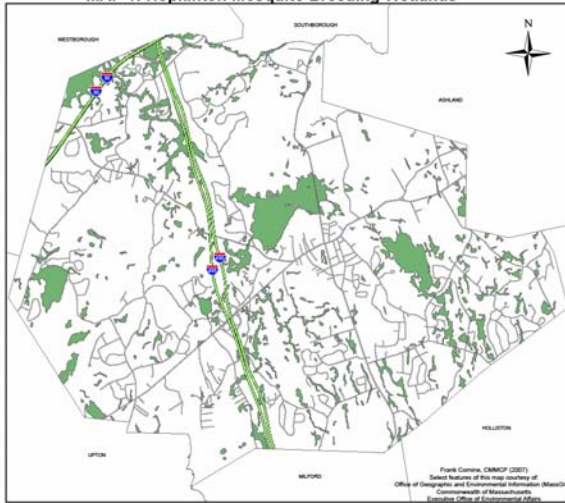


# Central Mass. Mosquito Control Project:

## Identifying Mosquito Problem Areas

**MAP 1: Hopkinton Mosquito Breeding Wetlands**



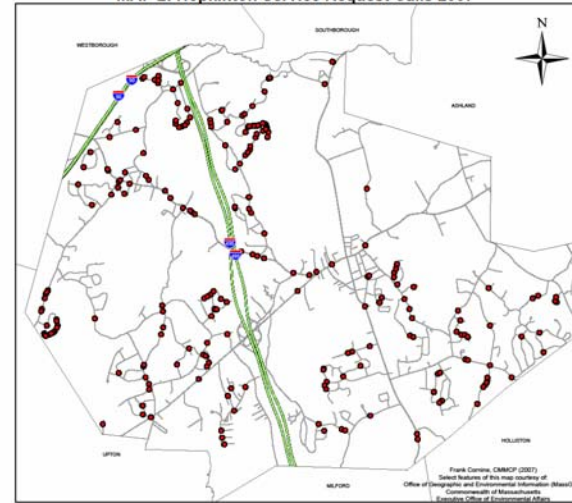
By  
Frank Corine III  
Field Biologist  
CMMCP

The Central Mass. Mosquito Control Project was established by the Massachusetts State Legislature in 1973 and presently services 39 towns and communities in Worcester and Middlesex Counties. Operating with Integrated Pest Management (IPM) in mind, CMMCP is continually striving to provide the least invasive practices for the management of mosquitoes and arboviruses suppression.

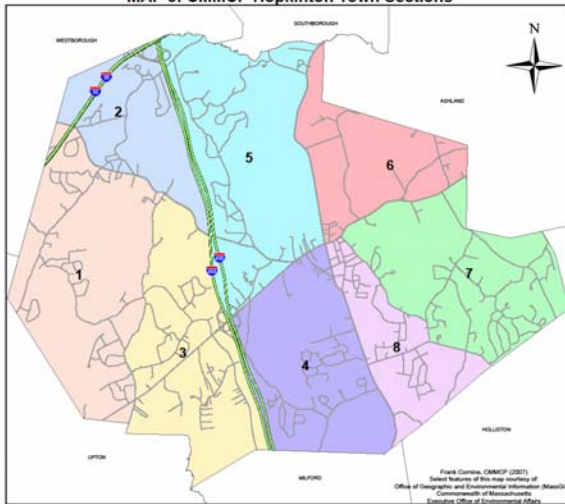
The presence of West Nile Virus and Eastern Equine Encephalitis in local mosquito populations reinforces the need to be aware of all the dynamics that are involved in the transmission of arboviruses to humans and certain livestock.



**MAP 2: Hopkinton Service Request Calls 2007**



**MAP 3: CMMCP Hopkinton Town Sections**



These compounding maps show a simple example of how CMMCP has been able to use GIS to answer questions, and more efficiently manage the arbovirus activity of central Massachusetts.

**MAP 1:** This map shows the wetlands in the town of Hopkinton that have the characteristics of those that typically breed mosquitoes. Using this map CMMCP is able to identify possible sources for mosquito populations.

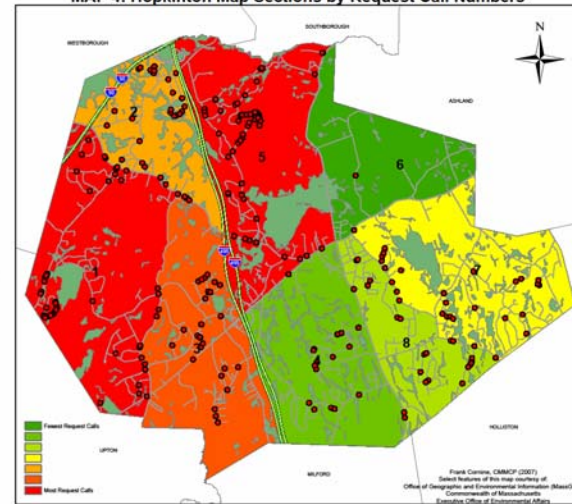
**MAP 2:** Based on a service request system, CMMCP is able to geocode the locations of residents who report high levels of mosquitoes in their area. This map shows those geocoded locations in Hopkinton for the 2007 season.

**MAP 3:** To help organize service requests in a town, CMMCP has created town sections, usually separated by major roads and/or natural barriers. This map depicts those map sections for the town of Hopkinton.

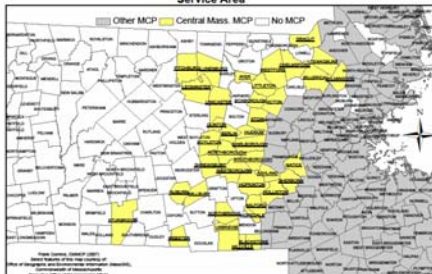
**MAP 4:** Utilizing all the information from the previous maps, this one is able to visually display which sections of town the highest number of service requests come from. This knowledge allows CMMCP to more efficiently manage the mosquito populations through preventative methods.

This is just one example of how CMMCP incorporates GIS into a single aspect of the Project. There are many other ways that CMMCP uses GIS to provide better service to the towns and communities that we serve. The integration of mosquito surveillance trap data, arbovirus data, weather data, and management practices data, as well as historical data all work to improve the overall effectiveness of CMMCP.

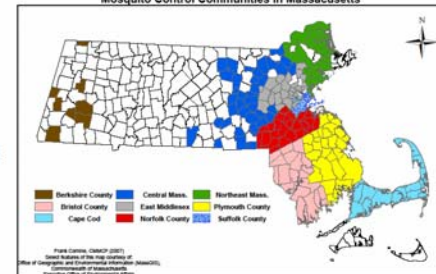
**MAP 4: Hopkinton Map Sections by Request Call Numbers**



**Central Mass. Mosquito Control Project Service Area**



**Mosquito Control Communities in Massachusetts**



Central Mass. Mosquito Control Project  
Phone: (508)393-3055  
Fax: (508)393-8492  
For additional information, please access our website at  
[www.cmmcp.org](http://www.cmmcp.org)